

Monthly Weather Summary in Thailand February 2026

In February 2026, a moderate to rather active high-pressure area from China periodically extended its ridge to cover upper Thailand throughout the month. As a result, the beginning and middle of the month saw cool weather across most areas of upper Thailand especially cold weather periodically was found almost of areas in northern and northeastern parts. Subsequently, temperatures across most areas increased further, leading to predominantly hot weather in most areas during daytime that effected by the heat low-pressure cell covered upper Thailand. The mean temperature in February 2026 was 1.0 °C above normal. For rainfall, there were rainfall and heavy rainfall during the end of the month that effected by the southeasterly and southwesterly winds prevailed over northern and upper central parts during the middle of the month accompanied with westerly trough moving to cover northern and upper northeastern parts during the end of the month. The southern region experienced rainfall in intermittent spells throughout the month because of prevailing of moderate northeast monsoon over the Gulf of Thailand and southern part during the beginning and middle of the month, coupled with southerly winds prevailing throughout the month. The average total rainfall in Thailand for this month was 14% above normal, with in most of regions reporting above-normal monthly rainfall: the northern part 1.7 mm (17%), the northeastern part 11.5 mm (74%), the central part 10.6 mm (86%) and the southern part (west coast) 14.5 mm (48%) while was lower than normal in the eastern part 1.4 mm (5%) and the southern part (east coast) 17.0 mm (42%) Further details are provided as follows:

1-10 February: The high-pressure area covered upper Thailand throughout the period. During the second half of the period, another active high-pressure area from China extended its ridge to cover the mentioned areas. In addition, the southerly and southeasterly winds prevailed over central and eastern parts. These conditions caused cool weather over Thailand especially cold weather in several areas in upper portion of northern and northeastern parts. The lowest temperature of 11.6 °C was Amphoe Umphang in Tak province on February 3 and dropped in the mountainous areas and mountain tops to 4.0 °C at Kew Mae Pan in Chiang Mai province on February 3 and 6. For rainfall, there was no rain in upper Thailand except for isolated to scattered rain with heavy to very heavy rainfall in some areas in central and eastern parts and maximum daily rainfall of 173.0 mm at Amphoe Nong Mamong in Chai Nat province on February 8. In southern Thailand, there was affected by the prevailing of moderate northeast monsoon which over southern part almost the period caused isolated rain with heavy rainfall in some areas mainly along east coast. The highest daily rainfall was 85.0 mm at Amphoe Kapong in Phang-Nga province on February 6.

11-20 February : The weak high-pressure area that dominated upper Thailand during the first half of the period after that the moderate high-pressure area from China extended its ridge to cover northeastern part. Additionally, the southeasterly wind prevailed over central and eastern parts during the beginning and middle of the periods then the southeasterly and southwesterly winds prevailed over northern and upper central parts. These resulted in northern and northeastern parts that cool and cold weather mainly in northern part while some areas of central and eastern parts experienced cool weather. The lowest temperature of 13.2 °C was Amphoe Mueang in Mae Hong Son province on February

12, at Amphoe Mae Sariang in Chiang Rai province on February 14 and dropped in the mountainous areas and mountain tops to 4.0 °C at Kew Mae Pan in Chiang Mai province on February 13, at Doi Inthanon in Chiang Mai province on February 14. For rainfall, scanty rainfall was observed in northern and central parts while eastern part experienced isolated rain with heavy rainfall in some lower coastal areas. The maximum daily rainfall of 58.6 mm at Trat Highway District in Trat province on February 13. In southern part, with the prevailing of the northeast monsoon during the first half of the period then easterly and southeasterly winds prevailing the mentioned areas. These caused isolated to scattered rain almost the whole period with heavy rainfall in some areas and the highest daily rainfall was 58.6 mm at Amphoe Sukirin in Narathiwat province on February 17.

21-28 February : The weak high-pressure area covered northern and northeast parts during the beginning of the period after that the high-pressure area from China extended its ridge to cover the east side of northeastern part and the south China Sea. Besides, the heat low-pressure cover upper Thailand since in the middle of the period. Additionally, the westerly trough from Myanmar moved to cover northern and upper northeastern parts with the southerly wind prevailing over Thailand during the end of the period. This resulted in cool weather in the morning of northern and northeastern parts. The lowest temperature of 16.3 °C was Agrometeorological Station in Chiang Rai on February 27 and dropped in the mountainous areas and mountain tops to 6.0 °C at Doi Inthanon in Chiang Mai province on February 22-27. During daytime, hot weather mainly in the central and eastern parts with the highest maximum temperature was 39.5 °C at Amphoe Mueang in Kanchanaburi on February 22. For rainfall, upper Thailand experienced scattered to fairly widespread rain almost the whole period with heavy to very heavy rainfall in some areas with the maximum daily rainfall of 101.9 mm at Amphoe Mueang in Bueng Kan province on February 27. In southern Thailand, there was received isolated rain during the beginning and the middle of the periods then scatted to fairly widespread rain with heavy rainfall in some areas. The highest daily rainfall was 69.0 mm at Trang Rubber Experimental Station in Trang province on February 24.

Note: 1. Rainfall, temperatures and natural disasters in this report were updated up to March 9, 2026.

Climate Center
Meteorological Development Division
Meteorological Department

Monthly Current Report
Rainfall and Accumulative Rainfall
February 2026

Northern Thailand

Station	Temperature (°c)		Rainfall (mm)		Accumulative rainfall (mm) Since 1 January	
	Mean	Above or below normal	Actual	Above or below normal	Actual	Above or below normal
Chiang Rai	23.6	1.7	12.3	-0.4	12.3	-16.9
Mae Hong Son	24.0	1.3	29.8	24.3	29.8	13.3
Phayao	24.6	1.6	0.2	-7.2	0.2	-21.5
Chiang Mai	26.1	1.9	1.6	-8.0	1.6	-19.3
Tha Wang Pha	25.0	2.3	1.2	-6.5	1.2	-21.5
Nan	25.8	1.9	5.0	-3.8	5.0	-18.1
Lamphun	25.8	1.3	7.2	2.8	7.2	-5.7
Lampang	26.5	1.6	2.3	-6.4	2.3	-21.1
Mae Sariang	24.3	1.9	7.1	1.9	7.1	-4.0
Phrae	25.9	1.3	16.9	5.2	16.9	-8.2
Uttaradit	27.7	1.5	20.4	9.5	20.4	-0.3
Bhumibol Dam	26.8	0.2	33.0	26.7	33.0	18.5
Tak	27.9	0.7	11.2	4.5	11.2	-4.5
Mae Sot	26.9	2.0	0.0	-6.8	0.0	-14.3
Umphang	24.1	2.1	1.9	-8.3	1.9	-17.2
Phitsanulok	28.0	1.2	39.8	23.2	39.8	16.2
Lom Sak	27.4	1.3	7.6	-8.7	7.6	-15.5
Phetchabun	28.0	1.5	7.4	-8.0	7.4	-18.8
Wichian Buri	28.2	0.7	15.5	2.7	15.5	-10.7
Kamphaeng Phet	27.9	1.1	9.8	-3.0	9.8	-8.3
Over the area	26.2	1.4	11.5	1.7 17%	11.5	-8.9 -44%

Northeastern Thailand

Station	Temperature (°c)		Rainfall (mm)		Accumulative rainfall (mm) Since 1 January	
	Mean	Above or below normal	Actual	Above or below normal	Actual	Above or below normal
Nong Khai	26.3	1.3	6.9	-11.4	6.9	-22.0
Loei	25.4	1.1	33.0	19.1	33.0	11.5
Udon Thani	25.6	0.4	77.2	56.0	77.2	49.6
Nakhon Phanom	26.4	1.9	31.6	10.0	31.6	5.9
Sakon Nakhon	26.2	1.8	73.2	45.8	73.2	39.7
Mukdahan	26.7	1.7	20.6	2.3	20.6	-0.7
Khon Kaen	27.1	1.2	36.0	18.7	36.0	12.7
Kosum Phisai	27.1	1.1	39.5	25.3	39.5	18.3
Roi Et	27.5	1.7	20.6	9.1	20.6	2.2
Chaiyaphum	27.7	1.0	8.5	1.3	8.5	-7.6
Ubon Ratchathani	27.9	1.4	35.5	24.2	35.5	21.0
Tha Tum	27.1	0.8	4.0	-7.9	4.0	-16.3
Surin	27.9	1.4	10.1	0.2	10.1	-6.4
Nakhon Ratchasima	28.0	1.1	10.2	-2.5	10.2	-11.1
Chok Chai	27.7	1.1	2.8	-10.0	2.8	-18.7
Nang Rong	25.9	-0.4	23.0	5.2	23.0	0.4
Over the area	26.9	1.2	27.0	11.5 74%	27.0	4.8 22%

- NOTES :
- 1) Mean temperature is the average of daily dry-bulb temperature
 - 2) "T" is trace, rainfall amount less than 0.1 mm.
 - 3) "blank" is incomplete data.
 - 4) Temperature and rainfall are preliminary data.

Monthly Current Report
Rainfall and Accumulative Rainfall
February 2026

Central Thailand

Station	Temperature (°c)		Rainfall (mm)		Accumulative rainfall (mm) Since 1 January	
	Mean	Above or below normal	Actual	Above or below normal	Actual	Above or below normal
Nakhon Sawan	28.6	0.6	0.1	-12.4	0.1	-18.0
Bua Chum	27.9	0.5	20.5	11.9	20.5	0.6
Lop Buri	28.9	0.7	11.2	2.5	11.2	-7.2
Suphan Buri	28.8	1.1	17.0	11.4	30.2	19.7
Thong Pha Phum	27.6	0.7	34.8	23.3	34.8	16.1
Kanchanaburi	29.3	1.1	64.3	46.0	64.3	38.4
Bangkok Airport	29.3	0.8	27.8	16.3	27.8	0.5
Bangkok Metropolis	29.8	1.2	7.6	-13.8	11.8	-33.2
Over the area	28.8	0.9	22.9	10.6 86%	25.1	2.1 9%

Eastern Thailand

Station	Temperature (°c)		Rainfall (mm)		Accumulative rainfall (mm) Since 1 January	
	Mean	Above or below normal	Actual	Above or below normal	Actual	Above or below normal
Prachin Buri	29.6	1.2	2.1	-11.6	2.1	-19.3
Kabin Buri	28.6	0.9	4.1	-15.2	5.9	-28.1
Aranyaprathet	29.5	1.2	3.5	-21.7	3.5	-32.3
Chon Buri	29.2	0.9	21.7	7.0	25.7	-6.6
Ko Sichang	28.3	0.6	8.6	-10.7	11.1	-29.8
Pattaya	28.0	0.7	1.0	-18.9	2.6	-33.6
Sattahip	28.0	0.6	15.0	-7.4	17.7	-36.4
Rayong	28.1	0.3	12.5	-19.7	16.7	-44.8
Chanthaburi	28.3	0.9	72.3	36.3	74.6	10.6
Khlong Yai	27.6	0.3	129.1	47.6	154.8	22.2
Over the area	28.5	0.7	27.0	-1.4 -5%	31.5	-19.8 -39%

- NOTES :
- 1) Mean temperature is the average of daily dry-bulb temperature
 - 2) "T" is trace, rainfall amount less than 0.1 mm.
 - 3) "blank" is incomplete data.
 - 4) Temperature and rainfall are preliminary data.

Monthly Current Report
Rainfall and Accumulative Rainfall
February 2026

Southern Thailand, east coast

Station	Temperature (°c)		Rainfall (mm)		Accumulative rainfall (mm) Since 1 January	
	Mean	Above or below normal	Actual	Above or below normal	Actual	Above or below normal
Phetchaburi	28.1	0.6	0.7	-3.8	0.7	-20.4
Hua Hin	28.1	0.8	6.4	-7.4	6.4	-32.4
Prachuap Khiri Khan	27.8	0.9	35.7	14.3	37.7	-29.1
Chumphon	27.7	0.9	30.7	-21.0	38.2	-110.2
Surat Thani	27.4	0.7	70.6	46.5	95.5	-3.6
Ko Samui	27.7	0.3	30.6	-33.7	84.8	-106.3
Nakhon Si Thammarat	27.0	0.4	26.0	-51.0	107.3	-232.0
Songkhla	27.7	0.2	10.1	-44.8	34.5	-147.6
Hat Yai Airport	27.3	0.5	15.4	-14.5	28.2	-89.8
Pattani Airport	27.2	0.5	6.1	-30.1	28.2	-102.2
Narathiwat	27.1	0.5	23.6	-41.4	43.0	-215.1
Over the area	27.6	0.6	23.3	-17.0 -42%	45.9	-99.0 -68%

Southern Thailand, west coast

Station	Temperature (°c)		Rainfall (mm)		Accumulative rainfall (mm) Since 1 January	
	Mean	Above or below normal	Actual	Above or below normal	Actual	Above or below normal
Ranong	28.3	0.7	12.7	-7.1	17.6	-43.3
Takua Pa	27.8	0.7	147.0	101.9	150.7	43.5
Phuket	29.6	0.6	31.7	7.7	32.1	-41.8
Phuket Airport	28.8	0.9	53.8	21.8	54.8	-43.4
Ko Lanta	28.4	0.1	33.3	9.2	102.3	47.2
Trang Airport	28.2	0.5	7.8	-17.8	39.5	-43.4
Satun	29.0	0.8	26.4	-14.2	30.6	-53.6
Over the area	28.6	0.6	44.7	14.5 48%	61.1	-19.3 -24%

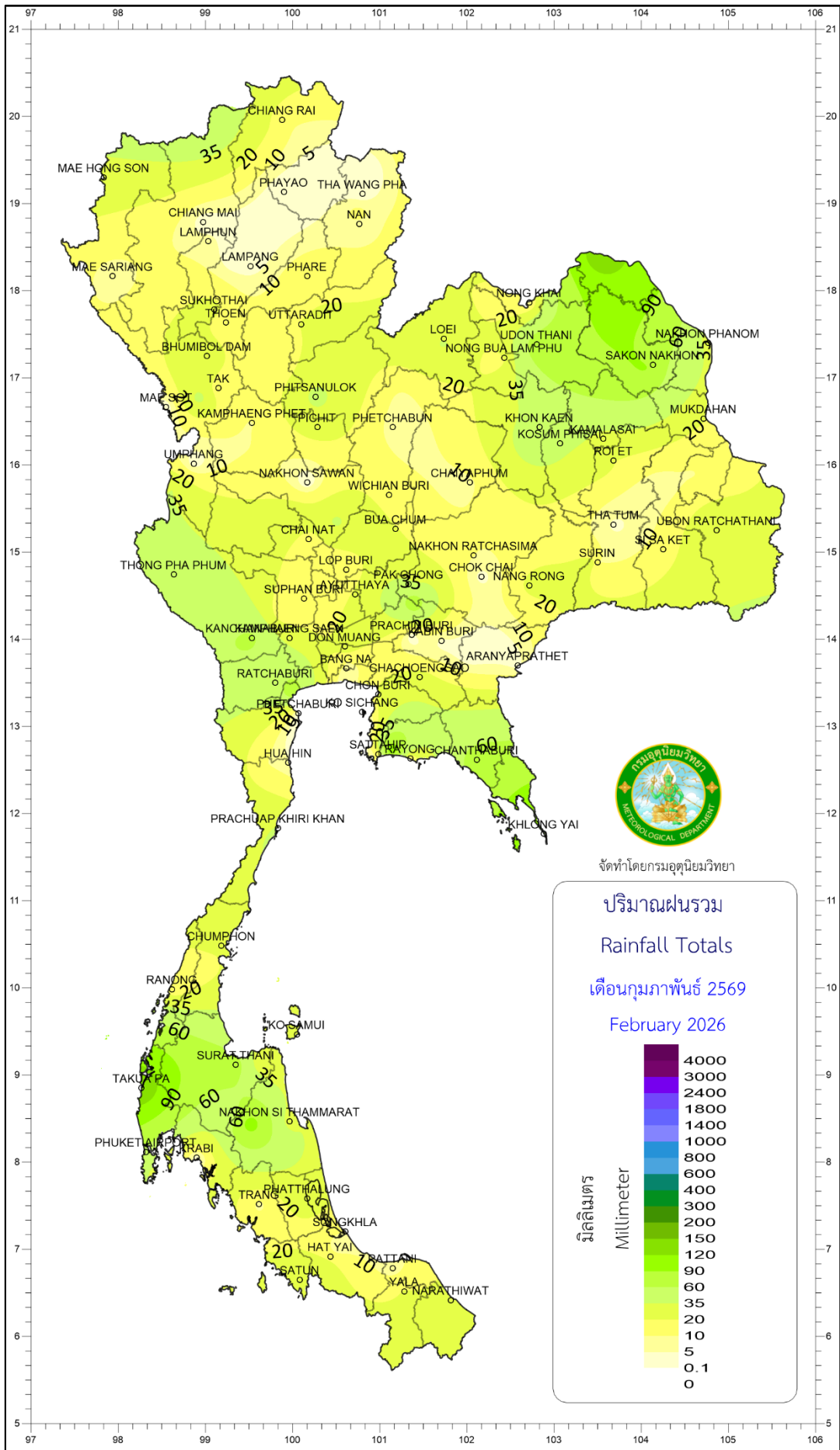
- NOTES :
- 1) Mean temperature is the average of daily dry-bulb temperature
 - 2) "T" is trace, rainfall amount less than 0.1 mm.
 - 3) "blank" is incomplete data.
 - 4) Temperature and rainfall are preliminary data.

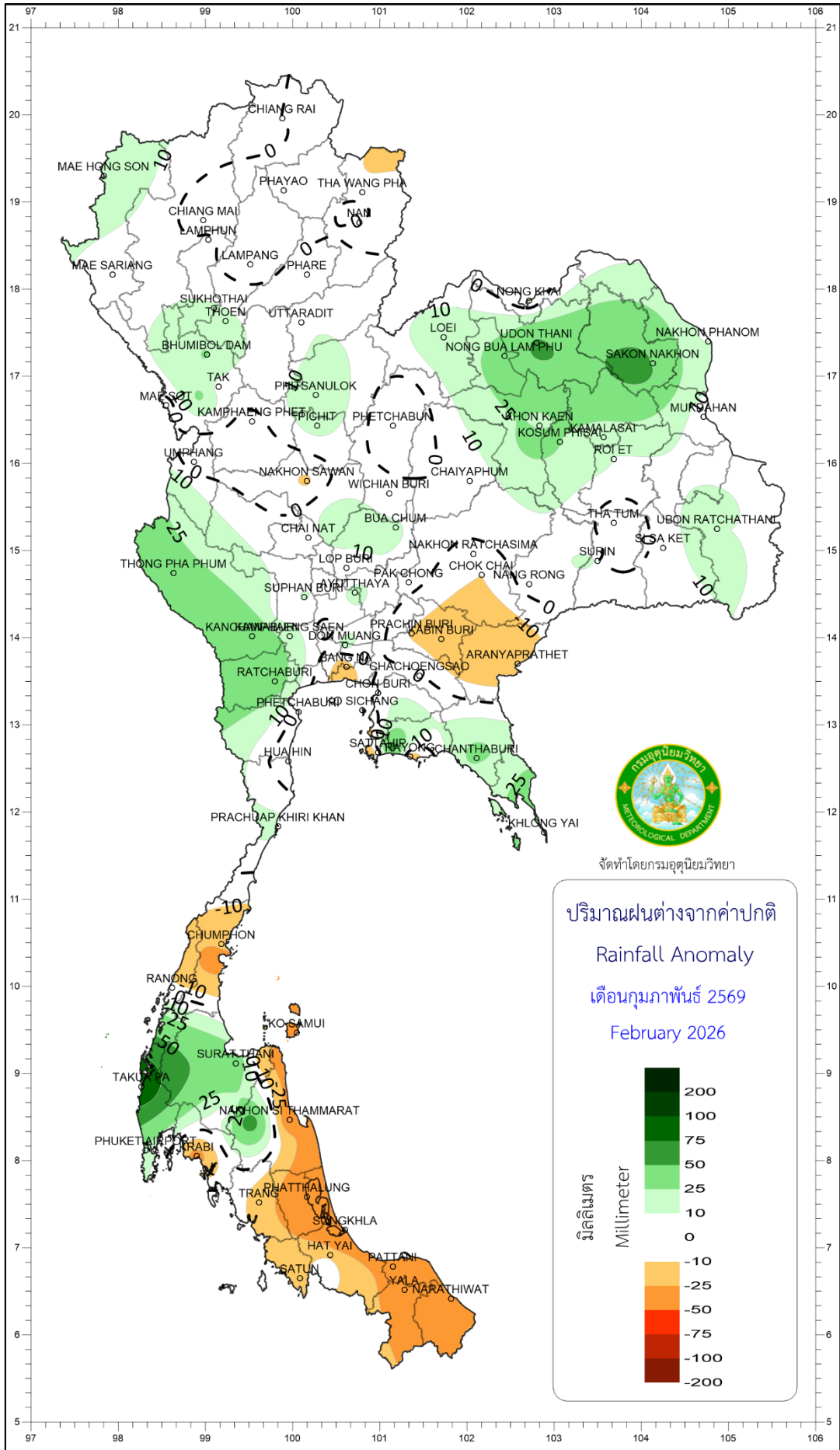
Monthly Current Report

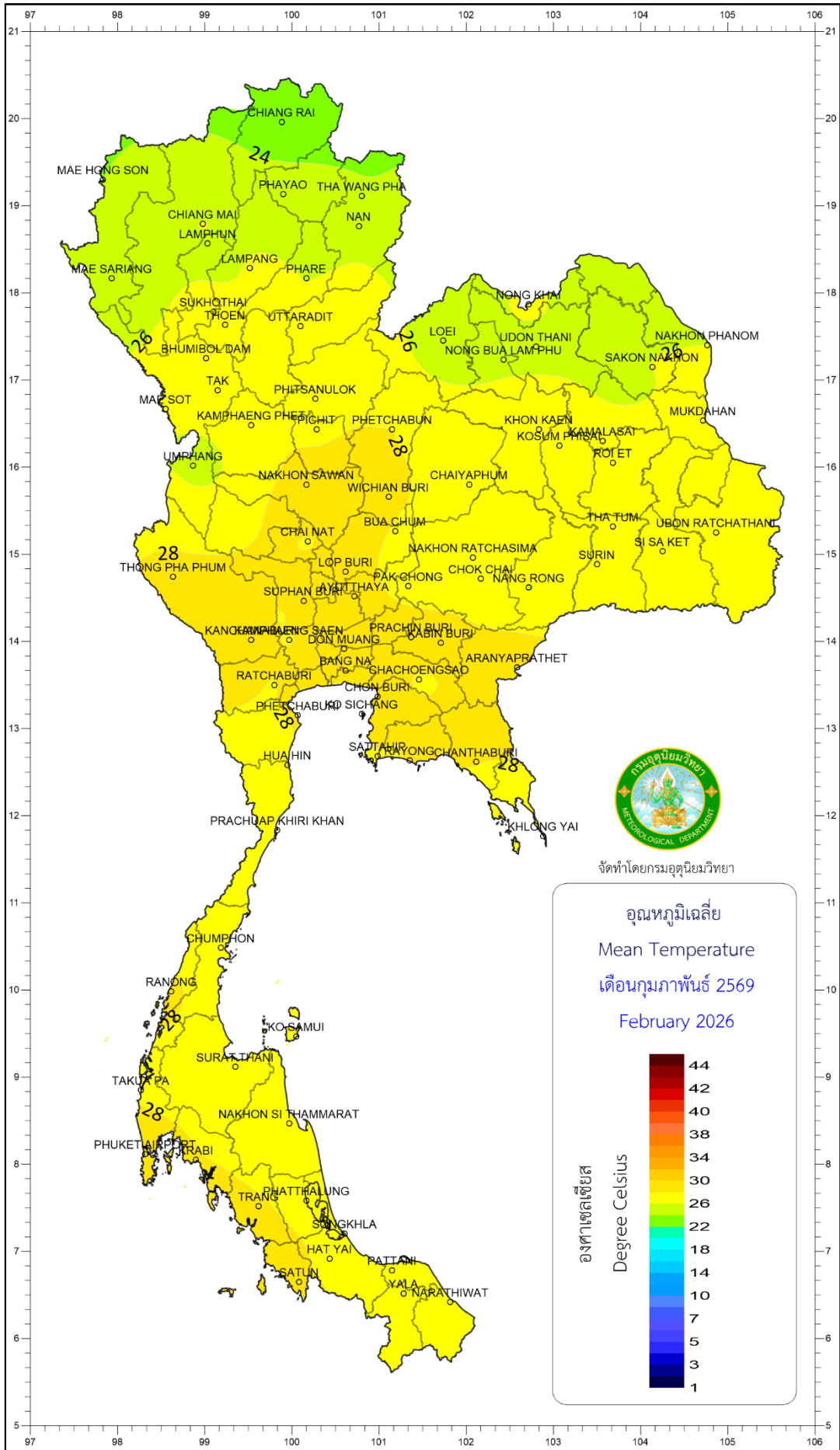
February 2026

Region	Station	Temperature (°c)		Rainfall (mm)		Accumulative rainfall (mm) Since 1 January	
		Mean	Above or below normal	Actual	Above or below normal	Actual	Above or below normal
North	Chiang Rai	23.6	1.7	12.3	-0.4	12.3	-16.9
	Mae Hong Son	24.0	1.3	29.8	24.3	29.8	13.3
	Phayao	24.6	1.6	0.2	-7.2	0.2	-21.5
	Chiang Mai	26.1	1.9	1.6	-8.0	1.6	-19.3
	Tha Wang Pha	25.0	2.3	1.2	-6.5	1.2	-21.5
	Nan	25.8	1.9	5.0	-3.8	5.0	-18.1
	Lamphun	25.8	1.3	7.2	2.8	7.2	-5.7
	Lampang	26.5	1.6	2.3	-6.4	2.3	-21.1
	Mae Sariang	24.3	1.9	7.1	1.9	7.1	-4.0
	Phrae	25.9	1.3	16.9	5.2	16.9	-8.2
	Uttaradit	27.7	1.5	20.4	9.5	20.4	-0.3
	Bhumibol Dam	26.8	0.2	33.0	26.7	33.0	18.5
	Tak	27.9	0.7	11.2	4.5	11.2	-4.5
	Mae Sot	26.9	2.0	0.0	-6.8	0.0	-14.3
	Umphang	24.1	2.1	1.9	-8.3	1.9	-17.2
	Phitsanulok	28.0	1.2	39.8	23.2	39.8	16.2
	Lom Sak	27.4	1.3	7.6	-8.7	7.6	-15.5
Phetchabun	28.0	1.5	7.4	-8.0	7.4	-18.8	
Wichian Buri	28.2	0.7	15.5	2.7	15.5	-10.7	
Kamphaeng Phet	27.9	1.1	9.8	-3.0	9.8	-8.3	
Northeast	Nong Khai	26.3	1.3	6.9	-11.4	6.9	-22.0
	Loei	25.4	1.1	33.0	19.1	33.0	11.5
	Udon Thani	25.6	0.4	77.2	56.0	77.2	49.6
	Nakhon Phanom	26.4	1.9	31.6	10.0	31.6	5.9
	Sakon Nakhon	26.2	1.8	73.2	45.8	73.2	39.7
	Mukdahan	26.7	1.7	20.6	2.3	20.6	-0.7
	Khon Kaen	27.1	1.2	36.0	18.7	36.0	12.7
	Kosum Phisai	27.1	1.1	39.5	25.3	39.5	18.3
	Roi Et	27.5	1.7	20.6	9.1	20.6	2.2
	Chaiyaphum	27.7	1.0	8.5	1.3	8.5	-7.6
	Ubon Ratchathani	27.9	1.4	35.5	24.2	35.5	21.0
	Tha Tum	27.1	0.8	4.0	-7.9	4.0	-16.3
	Surin	27.9	1.4	10.1	0.2	10.1	-6.4
	Nakhon Ratchasima	28.0	1.1	10.2	-2.5	10.2	-11.1
Chok Chai	27.7	1.1	2.8	-10.0	2.8	-18.7	
Nang Rong	25.9	-0.4	23.0	5.2	23.0	0.4	
Central	Nakhon Sawan	28.6	0.6	0.1	-12.4	0.1	-18.0
	Bua Chum	27.9	0.5	20.5	11.9	20.5	0.6
	Lop Buri	28.9	0.7	11.2	2.5	11.2	-7.2
	Suphan Buri	28.8	1.1	17.0	11.4	30.2	19.7
	Thong Pha Phum	27.6	0.7	34.8	23.3	34.8	16.1
	Kanchanaburi	29.3	1.1	64.3	46.0	64.3	38.4
	Bangkok Airport	29.3	0.8	27.8	16.3	27.8	0.5
	Bangkok Metropolis	29.8	1.2	7.6	-13.8	11.8	-33.2
East	Prachin Buri	29.6	1.2	2.1	-11.6	2.1	-19.3
	Kabin Buri	28.6	0.9	4.1	-15.2	5.9	-28.1
	Aranyaprathet	29.5	1.2	3.5	-21.7	3.5	-32.3
	Chon Buri	29.2	0.9	21.7	7.0	25.7	-6.6
	Ko Sichang	28.3	0.6	8.6	-10.7	11.1	-29.8
	Pattaya	28.0	0.7	1.0	-18.9	2.6	-33.6
	Sattahip	28.0	0.6	15.0	-7.4	17.7	-36.4
	Rayong	28.1	0.3	12.5	-19.7	16.7	-44.8
	Chanthaburi	28.3	0.9	72.3	36.3	74.6	10.6
	Khlung Yai	27.6	0.3	129.1	47.6	154.8	22.2
South (East Coast)	Phetchaburi	28.1	0.6	0.7	-3.8	0.7	-20.4
	Hua Hin	28.1	0.8	6.4	-7.4	6.4	-32.4
	Prachuap Khiri Khan	27.8	0.9	35.7	14.3	37.7	-29.1
	Chumphon	27.7	0.9	30.7	-21.0	38.2	-110.2
	Surat Thani	27.4	0.7	70.6	46.5	95.5	-3.6
	Ko Samui	27.7	0.3	30.6	-33.7	84.8	-106.3
	Nakhon Si Thammarat	27.0	0.4	26.0	-51.0	107.3	-232.0
	Songkhla	27.7	0.2	10.1	-44.8	34.5	-147.6
	Hat Yai Airport	27.3	0.5	15.4	-14.5	28.2	-89.8
	Pattani Airport	27.2	0.5	6.1	-30.1	28.2	-102.2
Narathiwat	27.1	0.5	23.6	-41.4	43.0	-215.1	
South (West Coast)	Ranong	28.3	0.7	12.7	-7.1	17.6	-43.3
	Takua Pa	27.8	0.7	147.0	101.9	150.7	43.5
	Phuket	29.6	0.6	31.7	7.7	32.1	-41.8
	Phuket Airport	28.8	0.9	53.8	21.8	54.8	-43.4
	Ko Lanta	28.4	0.1	33.3	9.2	102.3	47.2
	Trang Airport	28.2	0.5	7.8	-17.8	39.5	-43.4
Satun	29.0	0.8	26.4	-14.2	30.6	-53.6	
	Over the area	27.4	1.0	23.4	2.8	29.3	-20.9
					14%		-42%

- NOTES :
- 1) Mean temperature is the average of daily dry-bulb temperature
 - 2) "T" is trace, rainfall amount less than 0.1 mm.
 - 3) "blank" is incomplete data.
 - 4) Temperature and rainfall are preliminary data.

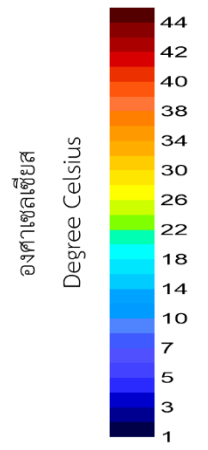






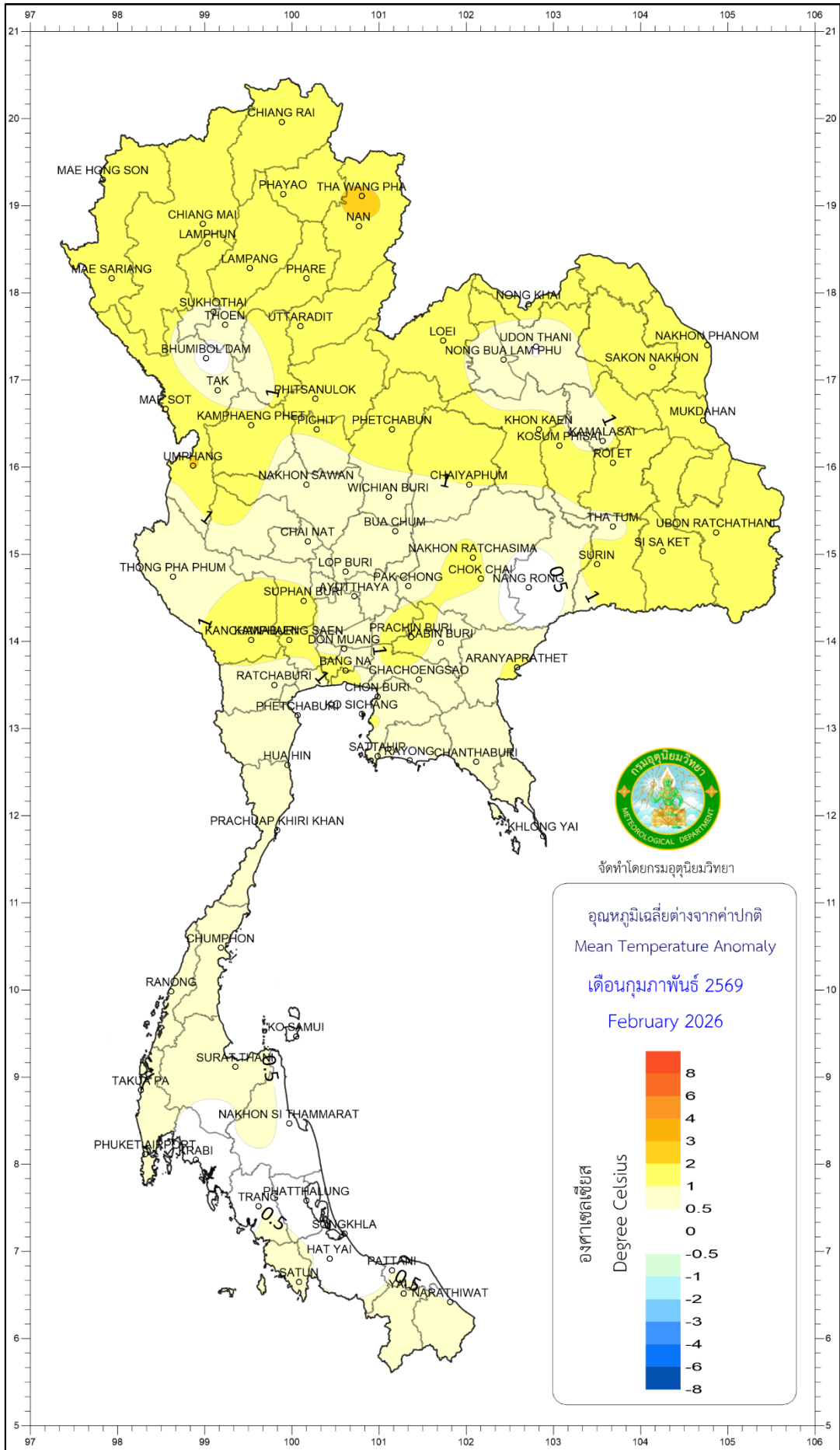
จัดทำโดยกรมอุตุนิยมวิทยา

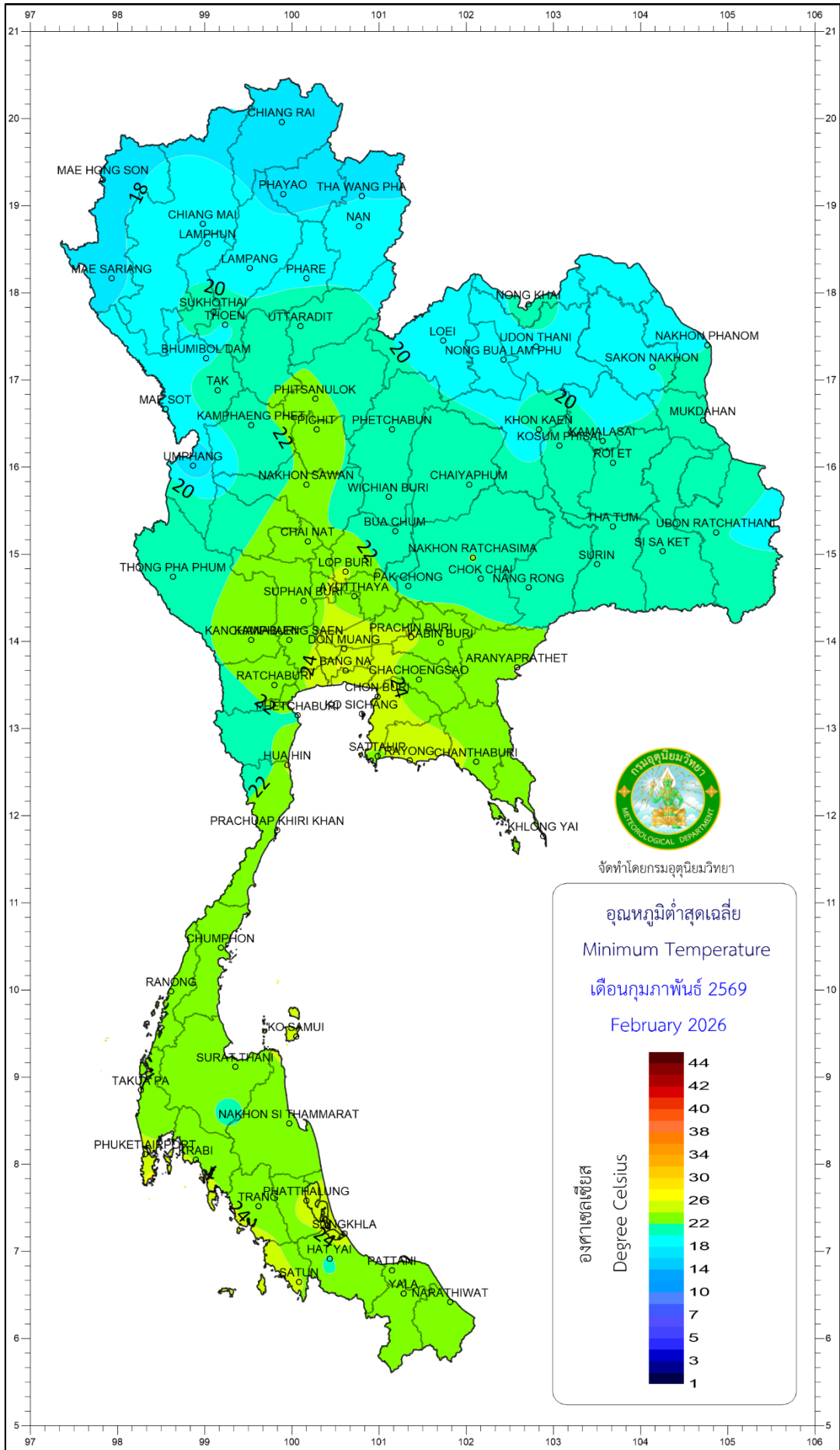
อุณหภูมิเฉลี่ย
Mean Temperature
เดือนกุมภาพันธ์ 2569
February 2026

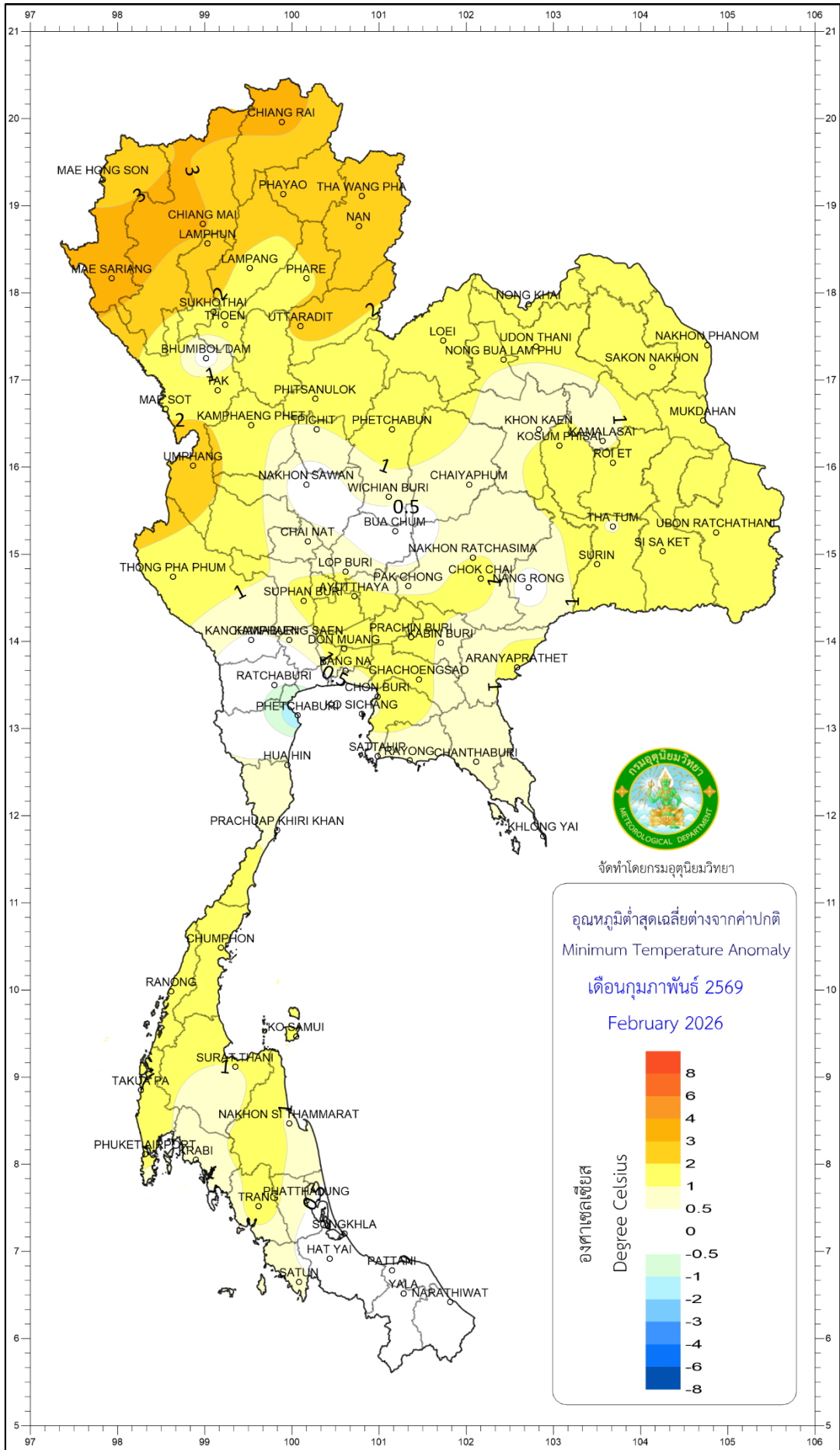


องศาเซลเซียส
Degree Celsius

1
3
5
7
10
14
18
22
26
30
34
38
40
42
44





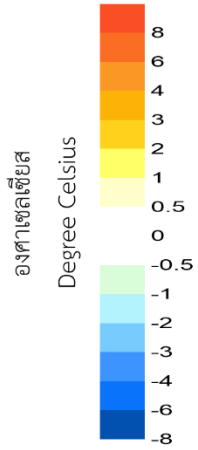


จัดทำโดยกรมอุตุนิยมวิทยา

อุณหภูมิต่ำสุดเฉลี่ยต่างจากค่าปกติ
Minimum Temperature Anomaly

เดือนกุมภาพันธ์ 2569

February 2026



องศาเซลเซียส

Degree Celsius

